

HOW TO APPLY VINYL DECALS (E.G. EXTERNAL VINYL TO A VEHICLE)

1. Ensure that the surface the decal is to be applied to is as smooth and clean as possible. Any dirt or grease will affect the adhesion of the decal and dirt will cause tiny air bubbles to appear. So, clean but do not polish the surface. Also it will help if the surface is not too cold.
2. Cut the decal from your chosen vinyl using the appropriate instructions for your machine and software. Normally vinyl is cut face upwards; so, there's no need to reverse text. Ensure you do not cut through the backing paper.
3. Place the decal on a hard surface and firmly rub a large enough piece of transfer film over the front of the decal and ensure that the decal is fully stuck to it. Then turn it over and peel the white paper side slowly away from the decal, ensuring that it is coming away cleanly. If the decal sticks to the paper, place it back and rub the top clear surface to re-stick, and then try again.
4. Once you have released the paper underside, you should have the decal stuck to the clear transfer sheet with the underside of the decal facing sticky side up.
5. Now decide where you want the decal to go. Place one edge of the decal onto the surface. Then using a credit card or a similar device, gently push the decal on from one side, keeping tension on it so no air bubbles get trapped underneath. Once it is fully applied, rub the decal firmly, ensuring that it is adhered to the surface.
6. Now slowly peel off the transfer sheet, ensuring that it peels away smoothly. If you see it starting to lift, go back, rub it down and try again.

That's it. Well done! Now stand back and admire your handiwork.



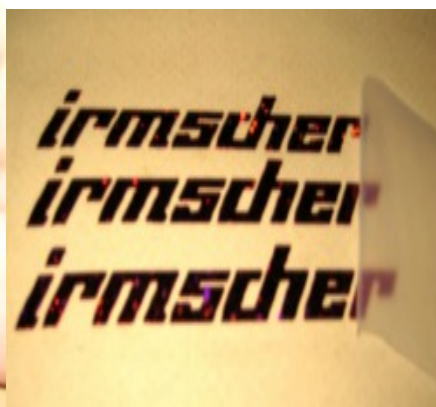
STICK TRANSFER FILM TO FRONT – PEEL OFF BACKING PAPER



YOUR LEFT WITH STICKY DECAL – STICK ONE EDGE DOWN FIRST



KEEPING TENSION IN ONE HAND – APPLY WITH CREDIT CARD



REMOVE TRANSFER FILM – YOU HAVE NOW APPLIED A DECAL