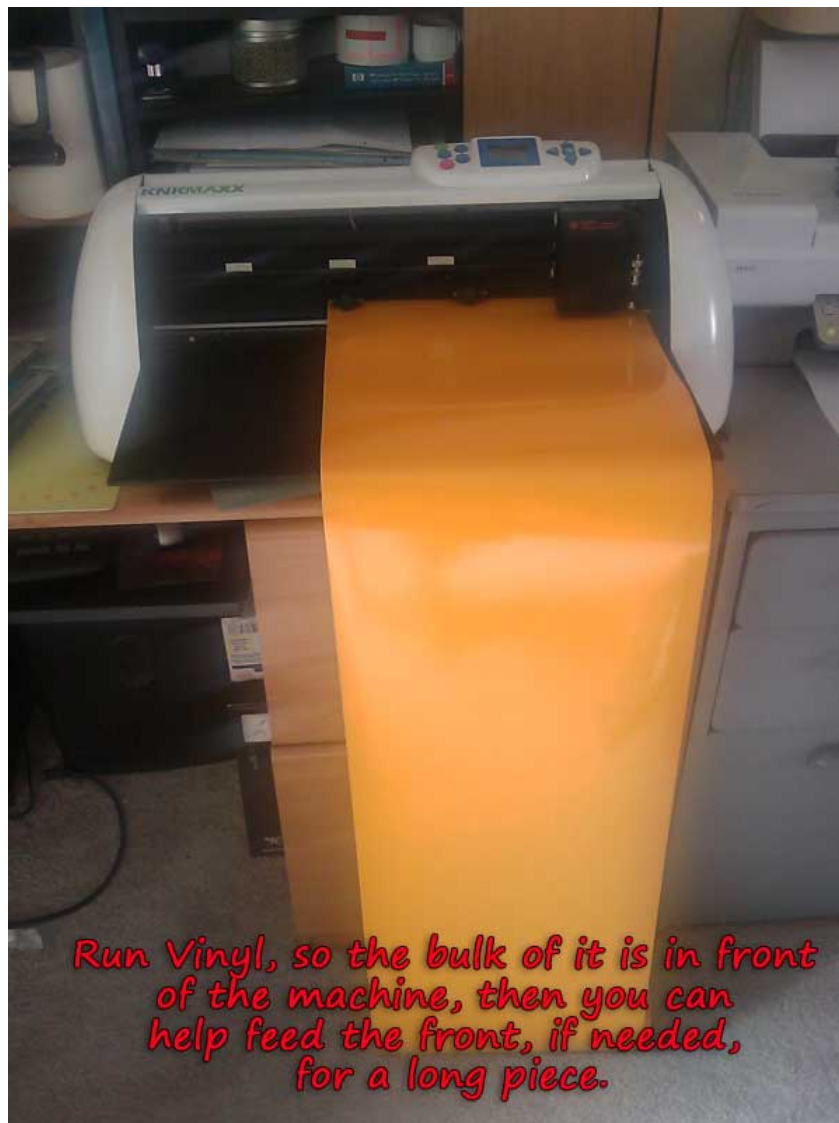
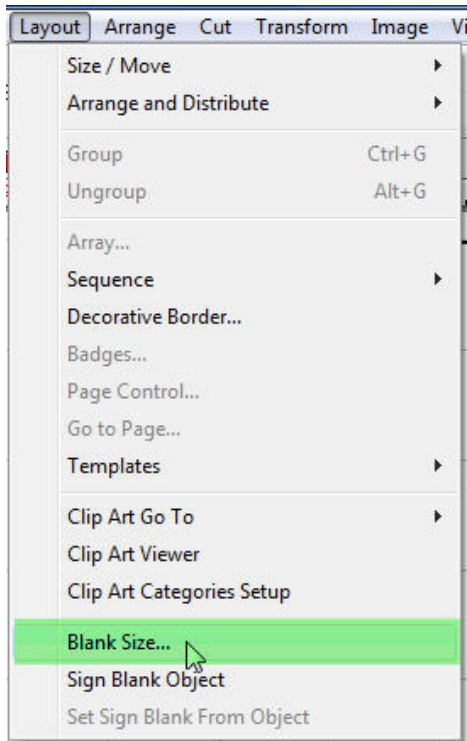


## [CUTTING LONG SHEETS OF VINYL]

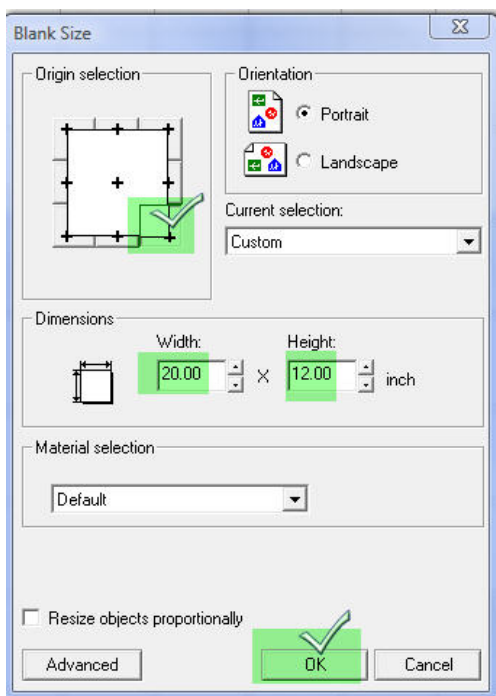
1. Feed your vinyl roll through the front, do not feed all the way through, just feed enough so the rollers can pull it in and out, and then set your origin at the upper right corner.



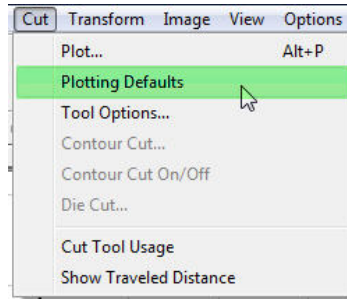
2. When making your page, you want to do some things different to your settings within the software....
  - a. Go to LAYOUT>BLANK SIZE



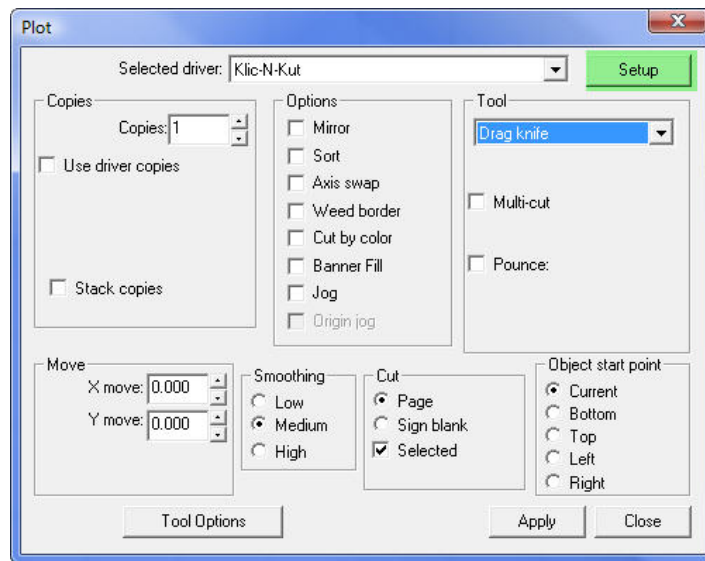
- b. Then, once in your blank size menu set your height and width of your document. You will also want to set your page origin to the bottom RIGHT corner (which correlates to the top right of the material you are cutting.) This will help the machine to know that you are starting with that part of the paper to the front and not all fed through the back.



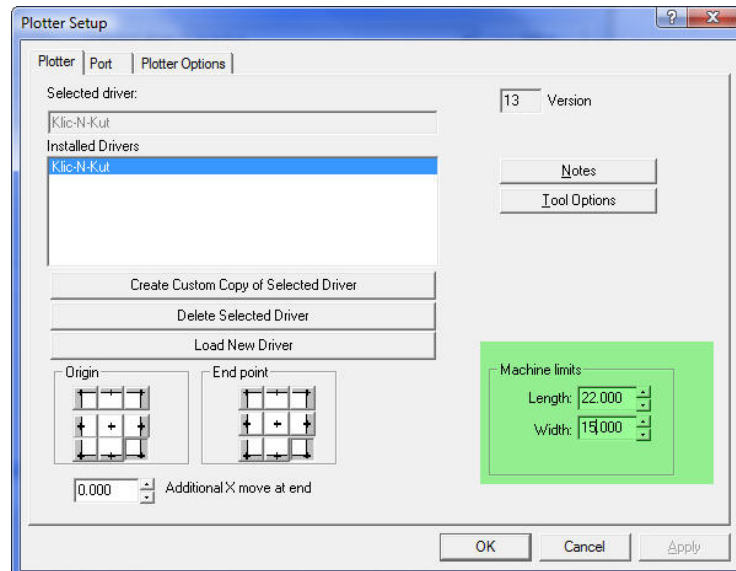
- c. Then, you need to go to your CUT>PLOTTING DEFAULTS



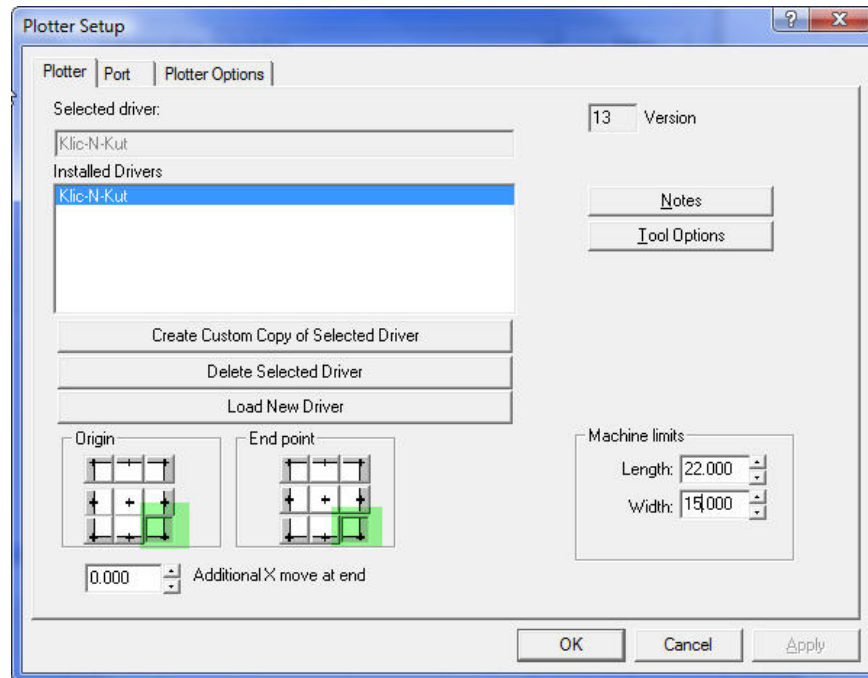
- d. Once in your plotting defaults, click on SETUP



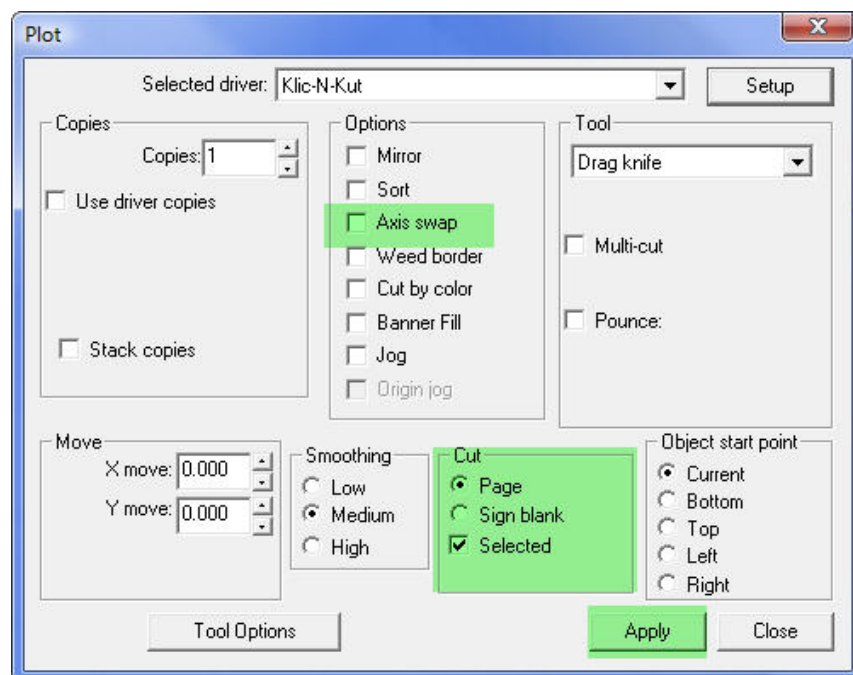
- e. In the next menu, on the PLOTTER tab, you will make sure your MACHINE settings are large enough to accommodate for your cut length. In this case, I want mine to be at LEAST 12" wide and 20" long, as that is the size of my cut. So I changed my MACHINE LIMITS to 22" length x 15" width.



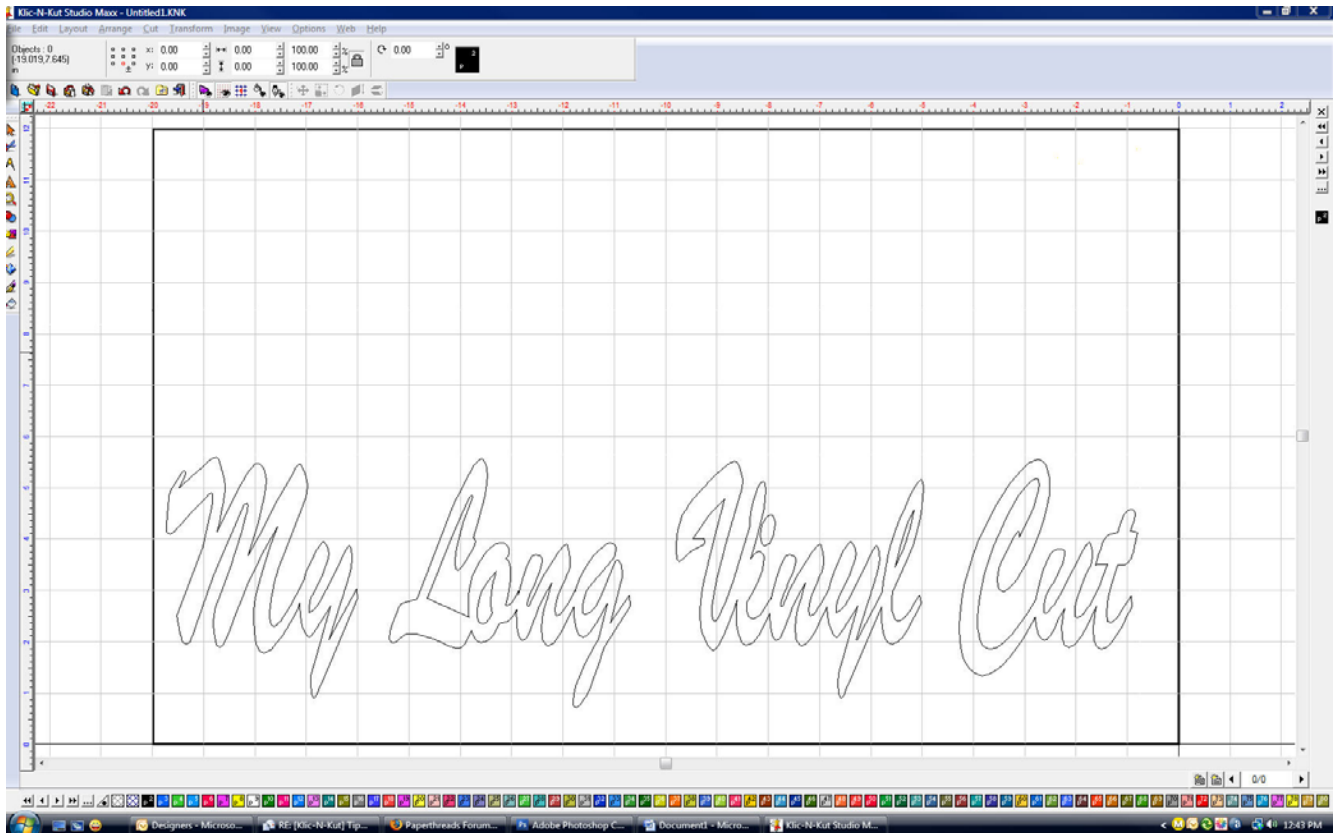
- f. Then, in that same menu, you will want to change your origin and end point. I have mine set to the bottom right corner. This tells the machine that I am setting my origin on the TOP RIGHT corner of my material, and I want the cut to END in that same position.



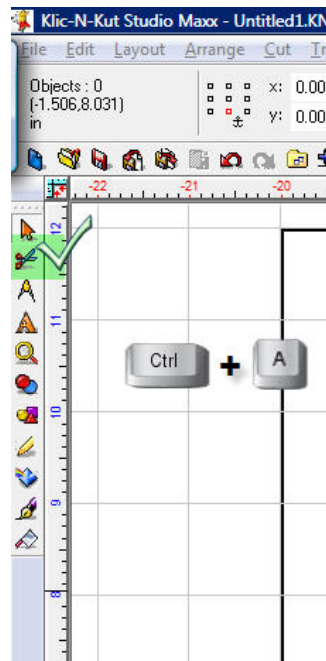
- g. Now, click OK on the Plotter Setup menu, and you will return to the plotting defaults menu, there you will need to make sure AXIS swap is turned off, and that page blank is set. Once all of that is set, click on APPLY, then CLOSE.



h. You are now ready to put your design on the page!



i. With your cut lines all set up the way you want, do a CTRL+A to select them all, and then click on the SCISSORS icon on the left tools to get to the cut menu.



- j. In the cut menu, you will note, your image shifted to the bottom right corner of the page area, indicating your origin is at the “top” of the material, and that the material will cut from top to bottom, as opposed to the typical bottom to top. This again, allows you to stay in front of the machine, and able to help feed the vinyl through, should the need arise! When you are done cutting, you can remove from the machine, AND THEN trim the cut piece from the roll...again, this allows you to trip this off close to the cut lines, wasting less material!



For my own experiences, I have found that by setting it all up this way, I can feed it through the front of the machine, and have better access to the roll of vinyl as it's feeding, to ensure that it doesn't catch on anything and get skewed.

Hope this helps!